

Diagnosoft® STAR

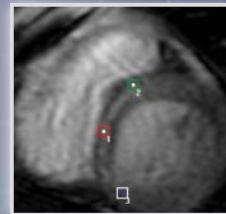
Cardiac MRI T2* analysis for measurement of myocardial iron

Early detection of myocardial iron is fundamental to the effective treatment of thalassemia and ventricular dysfunction, and the prevention of overt cardiomyopathy.

Diagnosoft STAR leverages cardiac MR imaging to accurately analyze myocardial iron content through T2* (T2-star) measurement. Using Diagnosoft STAR's optimized mathematical fitting algorithm, the software can predict heart failure caused by myocardial iron overload as well as accurately monitor iron-chelation therapy.

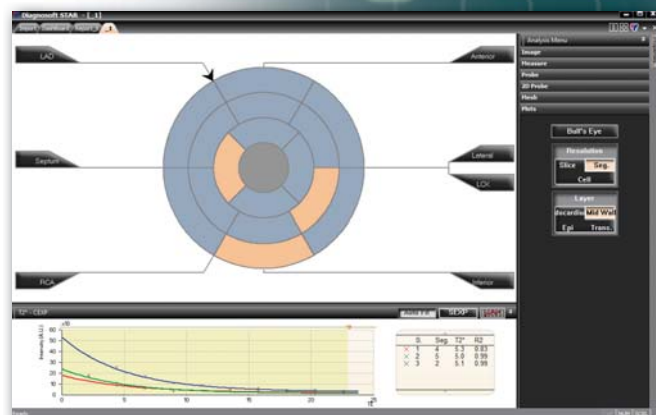
Diagnosoft® STAR Value

- Guides early detection and early treatment intervention for improved patient prognosis
- Provides quantitative monitoring of and feedback on heart therapies and treatments
- Delivers enterprise as well as departmental operability, and the flexibility to work with all, industry-wide cardiac MRI quantification products as well as scanners

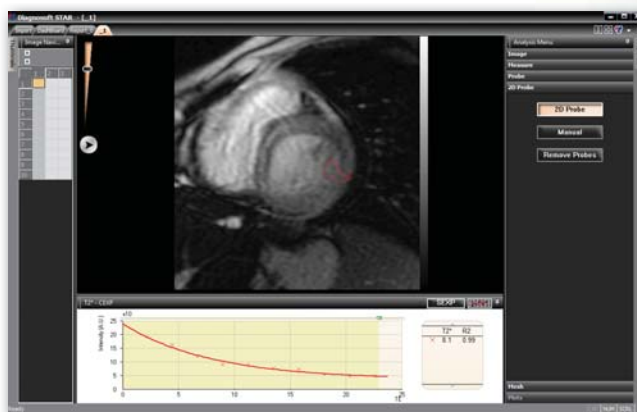


Diagnosoft STAR Benefits

- Performs T2* curve fitting, with constrained optimization, to determine a reproducible and accurate value for T2*
- Simplifies multi-slice ROI/segmental analysis
- Defines a region of interest.
- Obtains context-sensitive interactive help for ease of use
- Completes a complete cardiac T2* assessment in less than five minutes



Segmented model with intensity curves.



T2* values using single point probes.

Diagnosoft STAR Features

- Interactive analysis, data interrogation and visualization
- Data export for robust reporting
- Full analysis session record for comprehensive audit trails
- Segmented model with intensity curves
- User-defined, single point probes for T2* values
- User-friendly interface to simplify workflow

Diagnosoft® STAR: An integrated component of Diagnosoft® VIRTUE

Diagnosoft STAR is a module of the Diagnosoft VIRTUE suite of fully integrated, advanced cardiac MRI quantification offerings from Diagnosoft.

Designed for enterprise clinical deployment as well as departmental and research implementation, Diagnosoft Virtue provides a comprehensive, end-to-end CMRI quantification solution for diagnosing and assessing heart disease and abnormalities in all regions, muscles and ventricles of the heart.

As scanner and vendor-independent solutions, Diagnosoft VIRTUE modules complement any organization's product, IT and implementation strategy. Diagnosoft VIRTUE includes:

Diagnosoft® CORE

analyzes MR images to measure global function

Diagnosoft® HARP®

provides patented, unmatched analysis of tagged MR images

Diagnosoft® SENC

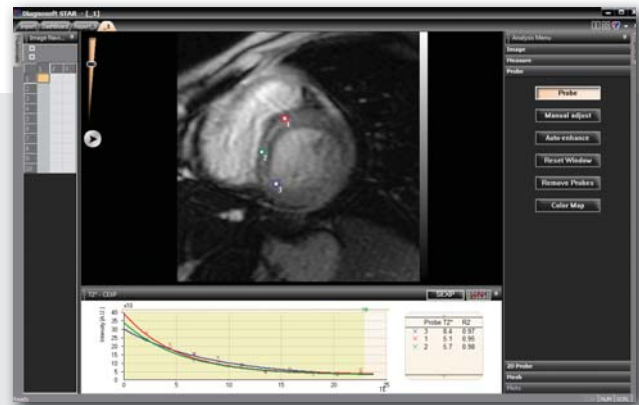
measures regional contraction using patented strain-encoded images

Diagnosoft® FLOW

measures and color codes blood flow velocity

Diagnosoft® STAR

calculates T2* to measure myocardial iron content



User defined 2D probes displaying T2* values.

About Diagnosoft®

Diagnosoft develops advanced, enterprise-capable software solutions that enable healthcare organizations, physicians and other caregivers to take a more proactive, interactive and integrated approach to care and wellness.

Diagnosoft® FUSION, a state-of-the-art clinical analytics and knowledge system, provides clinicians with access to aggregated and analyzed, longitudinal and real-time clinical patient data. Diagnosoft FUSION's Clinical intelligence and Insight Engine continuously monitors, sorts and displays pertinent, configurable, and actionable patient data and provides caregivers with personalized clinical signals about the patient's health status.

Diagnosoft® VIRTUE, the industry's leading cardiac MRI quantification software, delivers unmatched detail and analysis of regional heart function, empowering early detection, accurate diagnosis and more effective treatment of heart disease and abnormality.

For more information, visit diagnosoft.com.

Diagnosoft® is a registered trademark of Diagnosoft, Inc. HARP® is a registered trademark of Johns Hopkins University. Diagnosoft, Inc. disclaims any proprietary interest in the marks and names of others.