

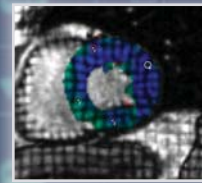
# Diagnosoft® HARP®

The only FDA 510k-cleared software to measure and analyze tagged cardiac MR images

You're seeking to move beyond the traditional boundaries in cardiac care and research, to explore new and innovative ways of diagnosing, treating and monitoring heart disease. Why not rely on an innovative tool uniquely capable of helping you achieve your goals?

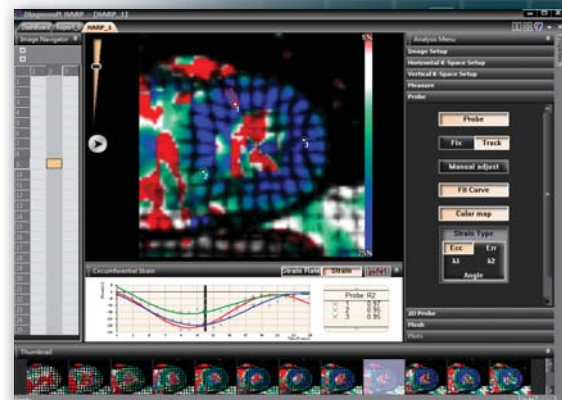
Diagnosoft's patented HARP (for HARMonic Phase methodology) goes where other cardiac MRI quantification software products can't go: deep into the layers and segmental walls of the myocardium to assess regional function. Diagnosoft HARP detects and measures what other software tools cannot: the precise degree and location of regional dysfunction, including sub-endocardial infarcts and other disease indications and abnormalities.

As the first — and only — FDA 510k-cleared software for the analysis and quantification of tagged MR images, HARP provides the patented technology and tools to precisely measure previously immeasurable irregularities in the heart muscle, and pave the way for more effective and proactive treatment and hence more positive clinical outcomes.



## Diagnosoft® HARP® Value

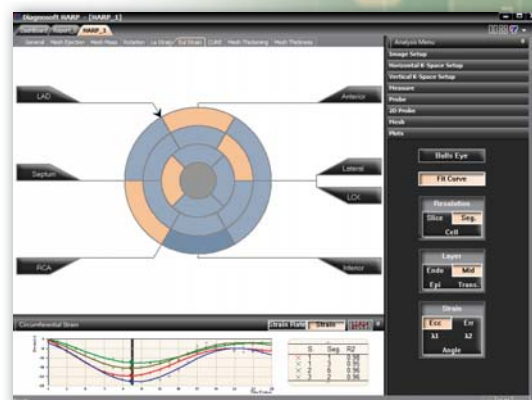
- Ensures precise and complete diagnosis and assessment of regional heart disease and abnormalities
- Supports early detection and early treatment intervention for improved patient prognosis
- Provides quantitative monitoring and feedback on heart therapies and treatments
- Delivers enterprise as well as departmental operability, and the flexibility to work with industry-wide cardiac MRI scanners and quantification software



Color-coded images for better quantification of regional function

## Diagnosoft® HARP® Benefits

- Measures and analyzes myocardium contraction and ventricular contortion
- Quantifies the motion of all heart segments, including regional strain and twisting of the left ventricle
- Pinpoints the precise degree and location of regional dysfunction
- Detects any presence of mechanical dyssynchrony
- Delivers rapid results with minimal user interaction
- Integrates with other Diagnosoft software offerings to ensure comprehensive assessment of regional and global function
- Implements quickly for current MRI scanner users, ensuring timely go-live and data access



17-segment model and strain curves

## Diagnosoft® HARP® Features

- Automatic generation of cardiac bull's-eye diagrams depicting myocardial strain
- Color-coded images for sharply defined quantification of regional function
- 17-segment model and strain curves
- Graphical user interface for: importing and analyzing images; exporting results as movies, images, tables and reports; and exporting measurements to Excel files, bull's-eye and time-resolved graphs, and other representations of the heart

## Diagnosoft® HARP®: An integrated component of Diagnosoft® VIRTUE

Diagnosoft HARP is a module of the Diagnosoft VIRTUE suite of fully integrated, advanced cardiac MRI quantification offerings from Diagnosoft.

Designed for enterprise clinical deployment as well as departmental and research implementation, Diagnosoft VIRTUE provides a comprehensive, end-to-end CMRI quantification solution for diagnosing and assessing heart disease and abnormalities in all regions of the heart.

As scanner- and vendor-independent solutions, Diagnosoft VIRTUE modules complement the organization's product and enterprise IT strategy. Diagnosoft VIRTUE includes:

### Diagnosoft® HARP®

by applying HARP patented technology, this module provides unmatched analysis of tagged MR images

### Diagnosoft® SENC

by applying SENC patented technology, this module measures regional contraction using strain-encoded images

### Diagnosoft® CORE

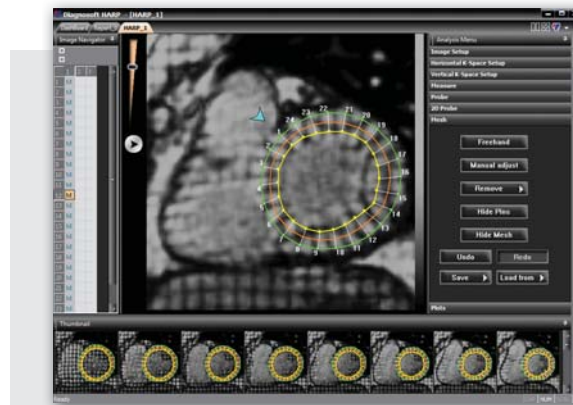
combines cine, perfusion and delayed enhancement analysis capabilities

### Diagnosoft® FLOW

assesses and color codes blood flow velocity

### Diagnosoft® STAR

calculates T2\* to measure myocardial iron content



Segmentation of the myocardium

## About Diagnosoft®

Diagnosoft develops enterprise software solutions and services that enable healthcare organizations, physicians and providers to take a more proactive, interactive and integrated approach to cardiovascular care and wellness.

Diagnosoft® FUSION, a state-of-the-art clinical analytics and knowledge support system, provides clinicians with access to aggregated and analyzed, longitudinal and real-time clinical patient data. Diagnosoft FUSION's Clinical intelligence and Insight Engine continuously monitors, sorts and displays pertinent, configurable, and actionable patient data and provides caregivers with personalized clinical signals about the patient's health status.

Diagnosoft® VIRTUE, the industry's leading cardiac MRI quantification software, delivers unmatched detail and analysis of regional heart function, empowering early detection, accurate diagnosis and more effective treatment of heart disease and abnormality.

For more information, visit [diagnosoft.com](http://diagnosoft.com).

*Diagnosoft® is a registered trademark of Diagnosoft, Inc. HARP® is a registered trademark of Johns Hopkins University. Diagnosoft, Inc. disclaims any proprietary interest in the marks and names of others.*